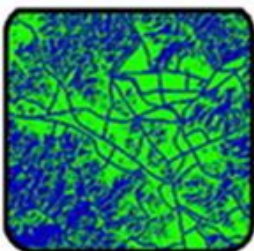




Pilot Pioneer Quick Start

V10.5



Contents

| | | |
|-------|--|----|
| 1 | Product Overview | 1 |
| 1.1 | About the Product | 1 |
| 1.2 | About the Document | 1 |
| 2 | Preparation..... | 2 |
| 2.1 | Software/Hardware Requirements | 2 |
| 2.2 | Configuration..... | 2 |
| 3 | Software Installation..... | 3 |
| 3.1 | Install Drivers and Components | 3 |
| 3.2 | Install Pilot Pioneer | 4 |
| 4 | Basic Operation..... | 5 |
| 4.1 | Run Pilot Pioneer..... | 5 |
| 4.2 | Configuration..... | 5 |
| 4.2.1 | Install Device Drivers | 5 |
| 4.2.2 | Automatic Detection..... | 5 |
| 4.2.3 | Manual Configuration | 6 |
| 4.3 | Configure Test Tasks | 7 |
| 4.3.1 | Configure Test Plans..... | 7 |
| 4.3.2 | Import Cell Site Database..... | 8 |
| 4.4 | Start Test and Collect Data..... | 10 |
| 4.4.1 | Connect Mode..... | 10 |
| 4.4.2 | Recording Mode | 10 |
| 5 | Technical Support and Contact Information..... | 11 |
| 5.1 | Technical Support | 11 |
| 5.2 | Link to DingLi..... | 11 |

1 Product Overview

1.1 About the Product

Pilot Pioneer is a real-time multi-technology mobile network and services performance test and measurement solution. Pilot Pioneer runs on MS Windows 10/8/7 operating system, and utilizes the latest smartphone test devices and frequency scanners for the measurement collection.

1.2 About the Document

This document focuses on the software configuration, installation and basic operation on service tests.

2 Preparation

2.1 Software/Hardware Requirements

It is recommended to use Windows 7/10 operating system. The following configuration is recommended:

| | |
|------------------|------------|
| CPU | Intel I5 |
| Memory | 8 GB |
| Hard Disk | 500 GB |
| Operating System | Win 7/8/10 |
| Windows Office | 2007/2013 |

2.2 Configuration

Pilot Pioneer V10.5 is compatible with PioneerTools Version: 2021.01.28

3 Software Installation

Antivirus software in PC may lead to installation failure or abnormal operation, please close the antivirus software and re-install Pioneer Drivers or add Pioneer Drivers to the trust list.

3.1 Install Drivers and Components

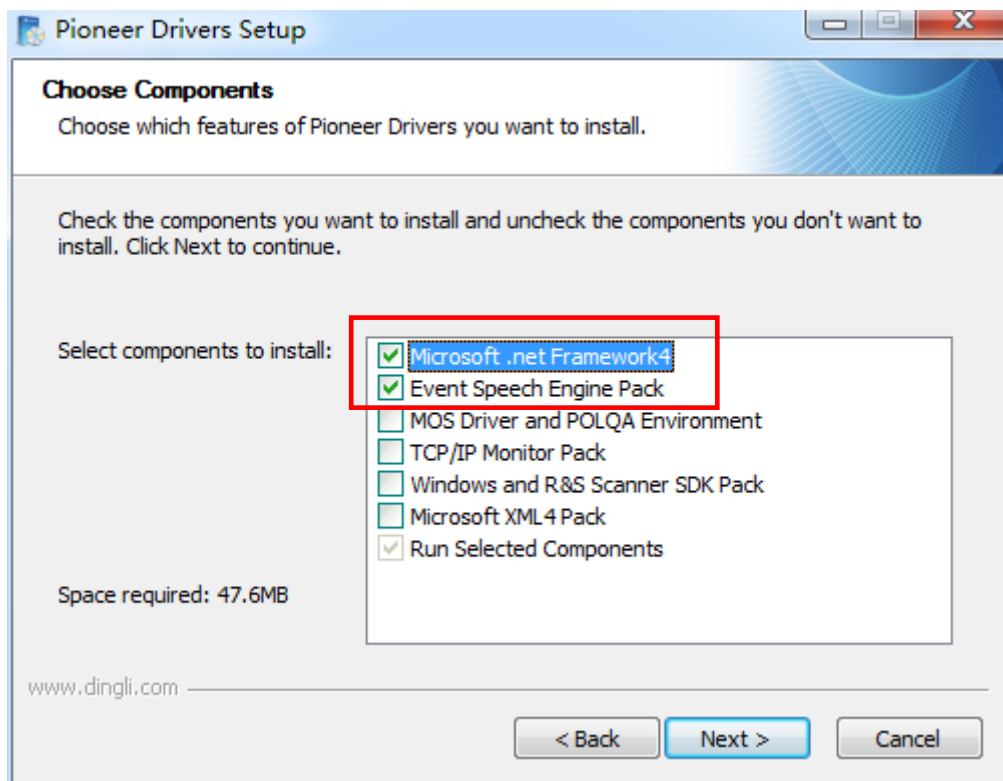
Double-click **PioneerDriversSetup.exe**.

Figure 3-1 Install Pioneer Drivers Setup.exe



Install the components that are selected by default (see the options in the red rectangle in the figure below) to create the operating environment. Users may choose to install the drivers for TCP/IP Sniffer or Scan test based on the actual test requirements.

Figure 3-2 Install components



Note: If your PC has already installed the components and drivers, it is unnecessary to re-install them. You may directly install Pilot Pioneer.

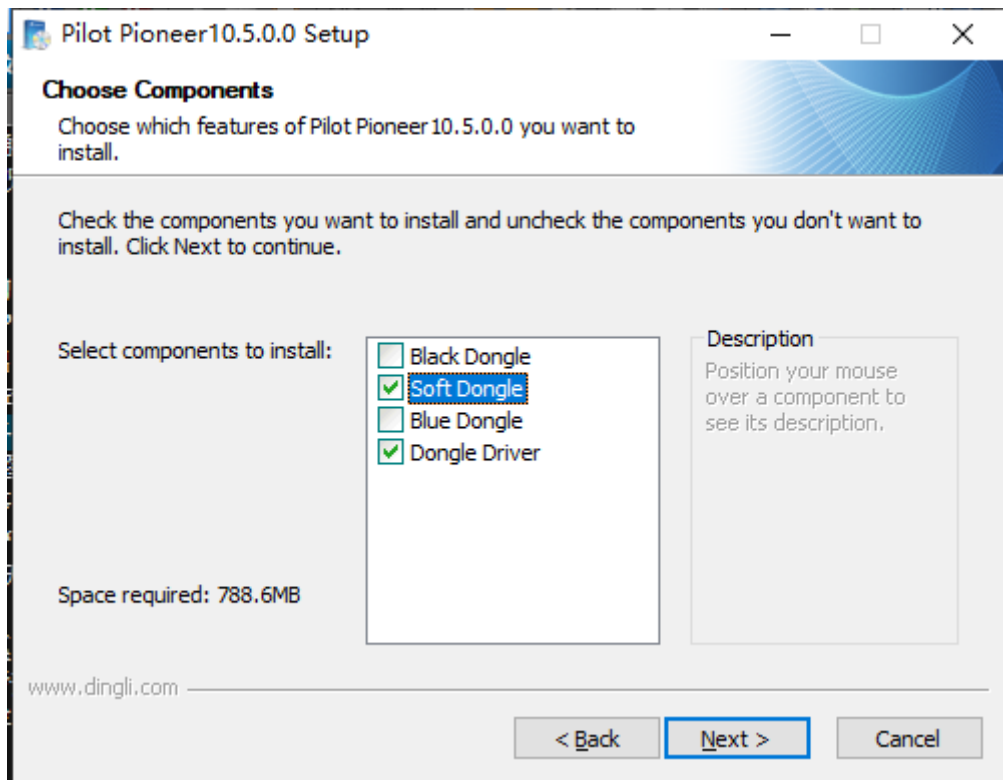
3.2 Install Pilot Pioneer

Double-click **PioneerSetup.exe** and install Pilot Pioneer according to the instructions.

Figure 3-3 Installing Pilot Pioneer



When installing Pilot Pioneer, select a dongle type based on the actual situation. Users must select **Dongle Driver**, and select a dongle type (hereinafter take **Soft Dongle** as an example) as required.



4 Basic Operation

4.1 Run Pilot Pioneer

Users need to install a dongle and verify related license information before running Pilot Pioneer.

If no license is granted, only simple functions are available, e.g. Chart window, Map window, Message window, and data replay.

4.2 Configuration

Users need to configure test devices such as handsets, scanners, and GPS before testing.

4.2.1 Install Device Drivers

Install device drivers for the test. When all drivers have been successfully installed and the devices are connected to the PC, users may view the ports corresponding to the devices on the system device manager.

4.2.2 Automatic Detection

For frequently used test devices, Pilot Pioneer supports automatic detection. Users do not need to configure device information manually.

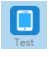

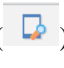
When the devices are connected to the PC, users may click  on the navigation pane, the numbers of unknown devices () will be displayed on the top right corner. Users may click the **Automatic Detection** button () on the left corner or the shortcut key F5 for automatic device detection. See the figure below:

Figure 4-1 Automatic detection

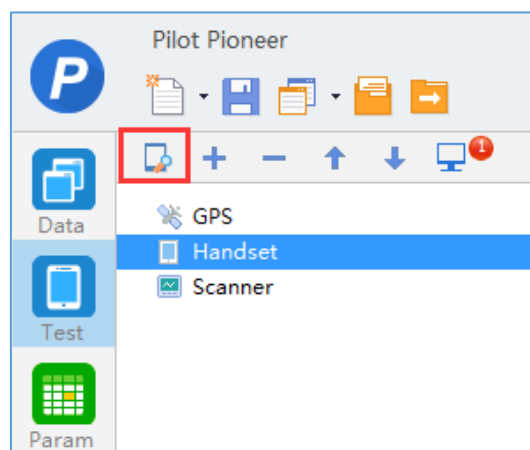
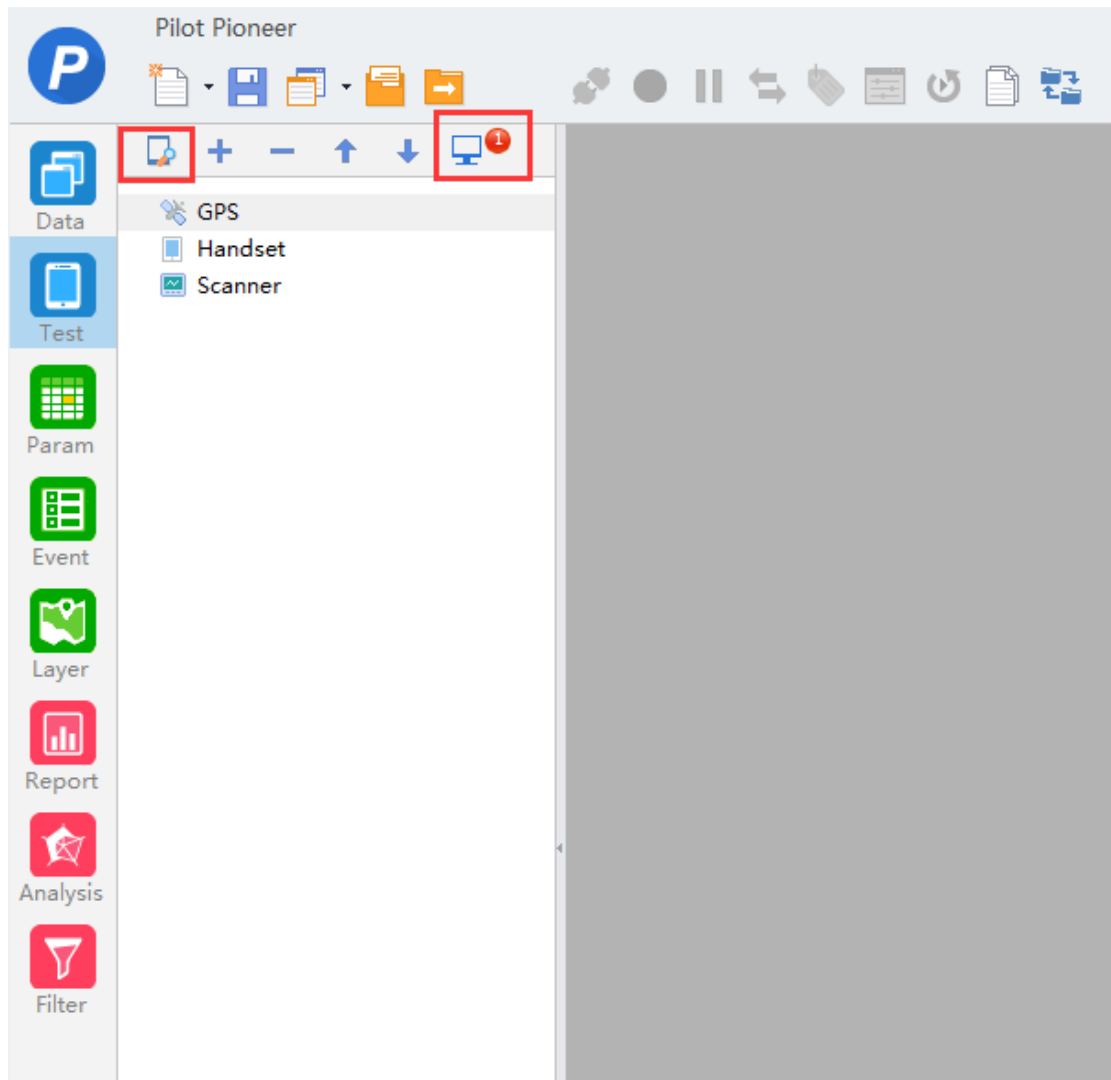


Figure 4-2 Automatic detection



4.2.3 Manual Configuration

After an external device is connected to the PC, users may manually configure the device name, port number and other information.

Follow the instructions below:



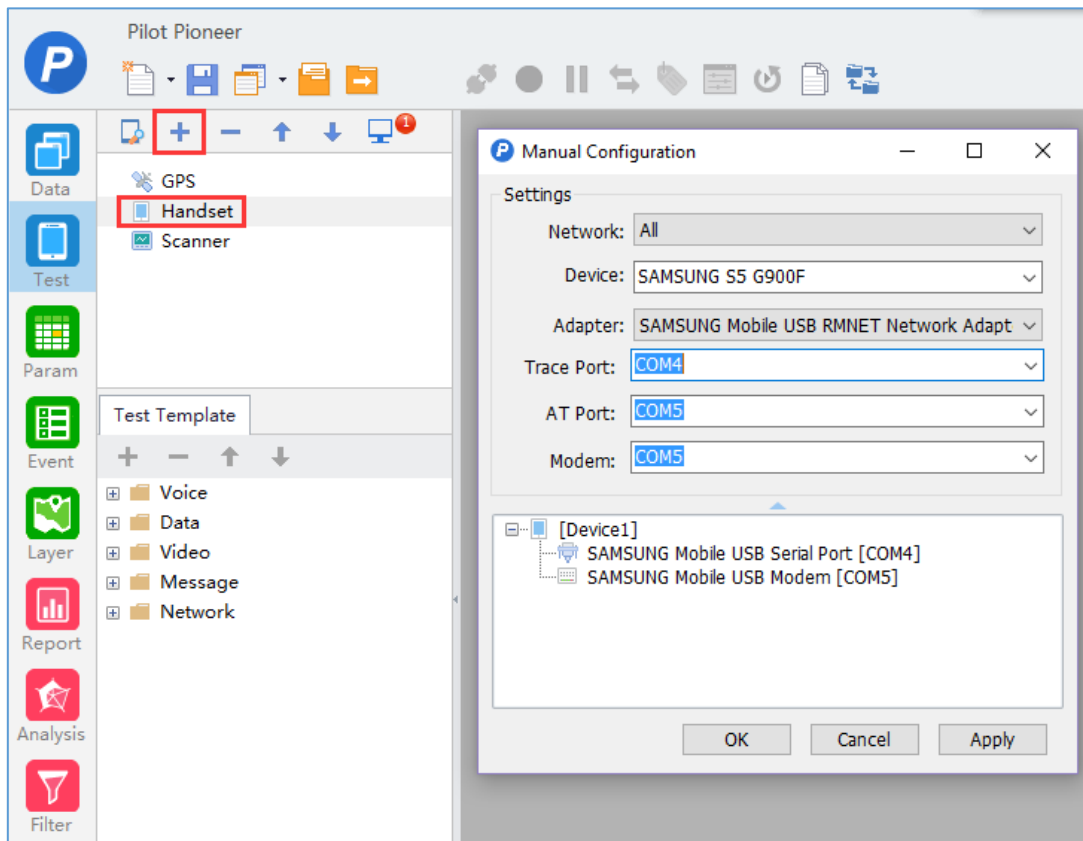
1. Click  on the navigation pane.
2. Click the device type to configure, e.g. **GPS**, **Handset**, **Scanner**, and lick , or double click **GPS/Handset/Scanner** to enter the **Manual Configuration** page.

Figure 4-3 Manual configuration (Handset)



4.3 Configure Test Tasks

Pilot Pioneer provides different test templates for users to create different test plans, which contains all executable test services.

When users select a device under **Handset** on the **Test** tab page, the test templates for this device will be displayed at the lower part of the pane. Users may right-click a template to edit the information.

There is no template for **Scanner**.

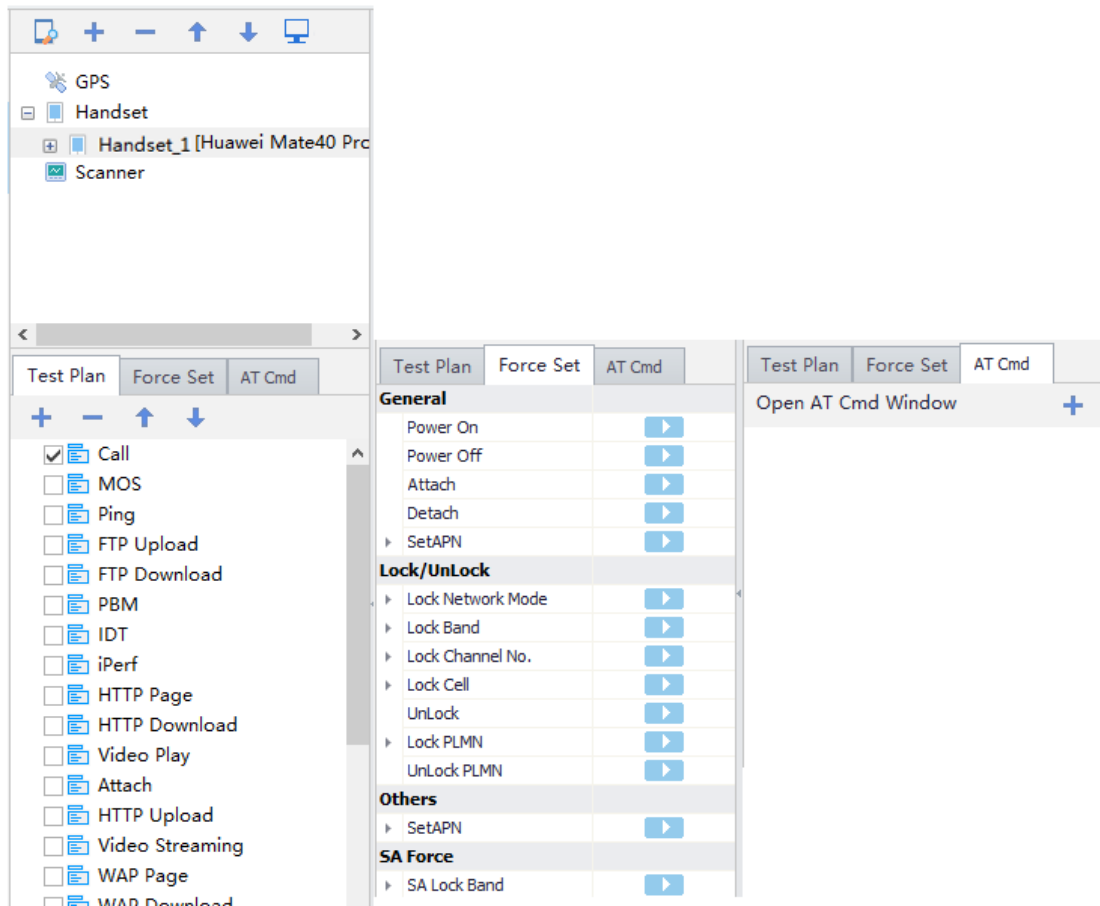
4.3.1 Configure Test Plans

After adding a handset, users may select the device, and double click a test template to generate a test plan.


After a scanner is added, the corresponding test plan will be automatically generated.

Note: If a device is deleted, the corresponding test plan will also be deleted.

Figure 4-4 Test plan



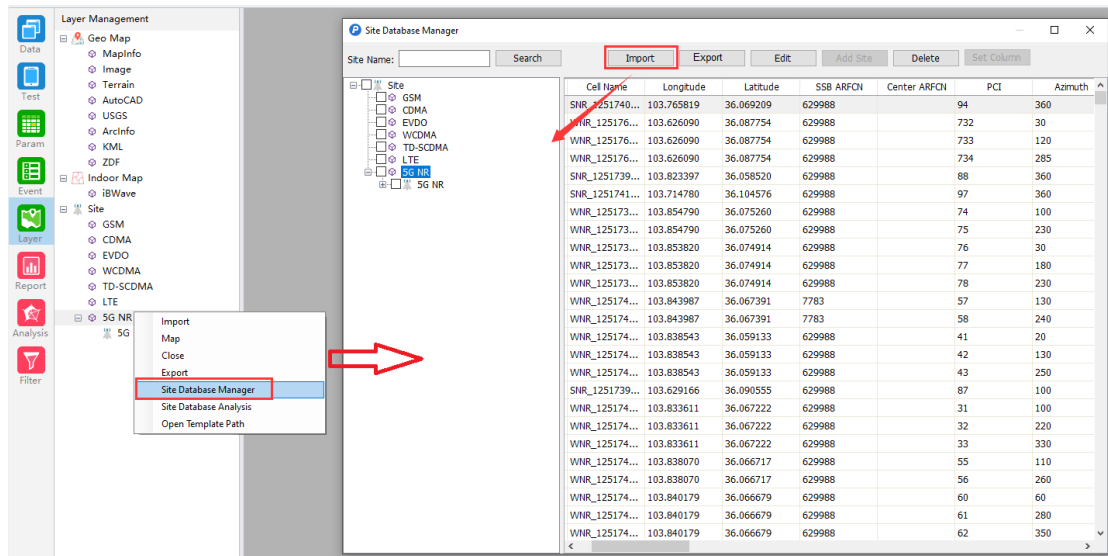
4.3.2 Import Cell Site Database

Users may tap  on the navigation pane to import cell site files.

The methods of adding cell sites are as follows:

Method 1: On the **Layer Management** window, right-click **Site** or a technology under **Site**, select **Site Database Manager**, and click **Import** to add a cell site file. See the figure below:

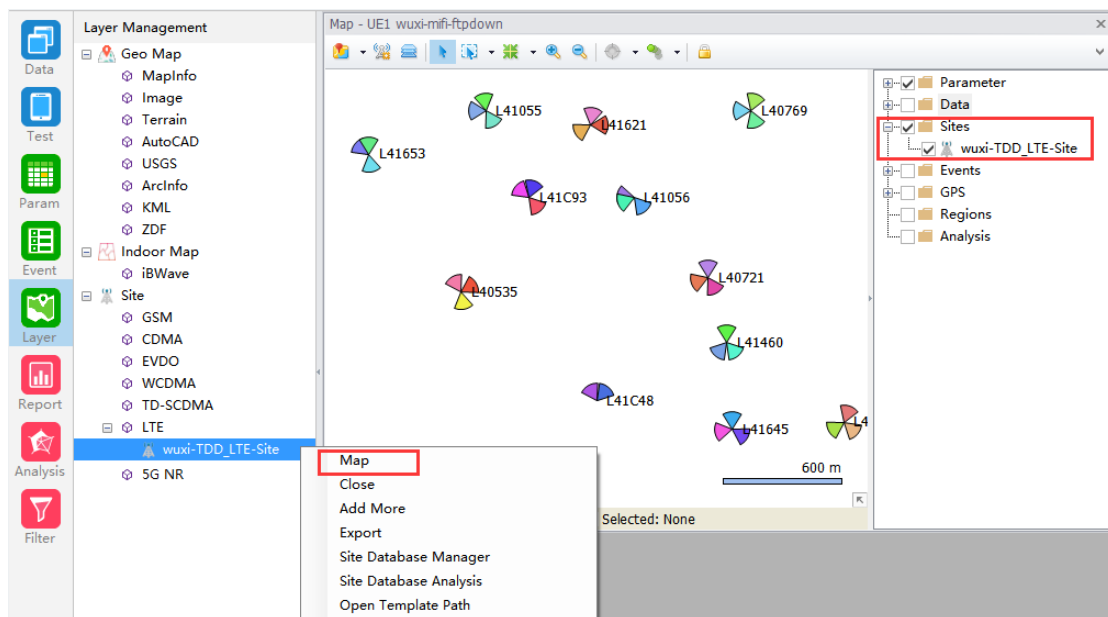
Figure 4-5 Import a cell site



Method 2: On the **Layer Management** window, right-click **Site** or a technology under **Site**, and select **Import** to add a cell site file. See the figure below:

After import cell site database, users may directly drag the imported cell sites under **Site** to the Map window, or right-click the imported cell sites and select **Map** to load the cell sites to the Map window for display.

Figure 4-6 Load cell sites to Map



4.4 Start Test and Collect Data

After the service test starts, Pilot Pioneer may collect data simultaneously, which includes the radio and test device information. There are two data collection modes: Connect and Recording.

4.4.1 Connect Mode

In this mode, Pilot Pioneer is able to display the current test information in real time and verify test information without saving log files. In this mode users may conduct tests and display the information without saving any test information.

To enter the connect mode, click the **Connect** icon () on the toolbar, or press the shortcut key **F6**.

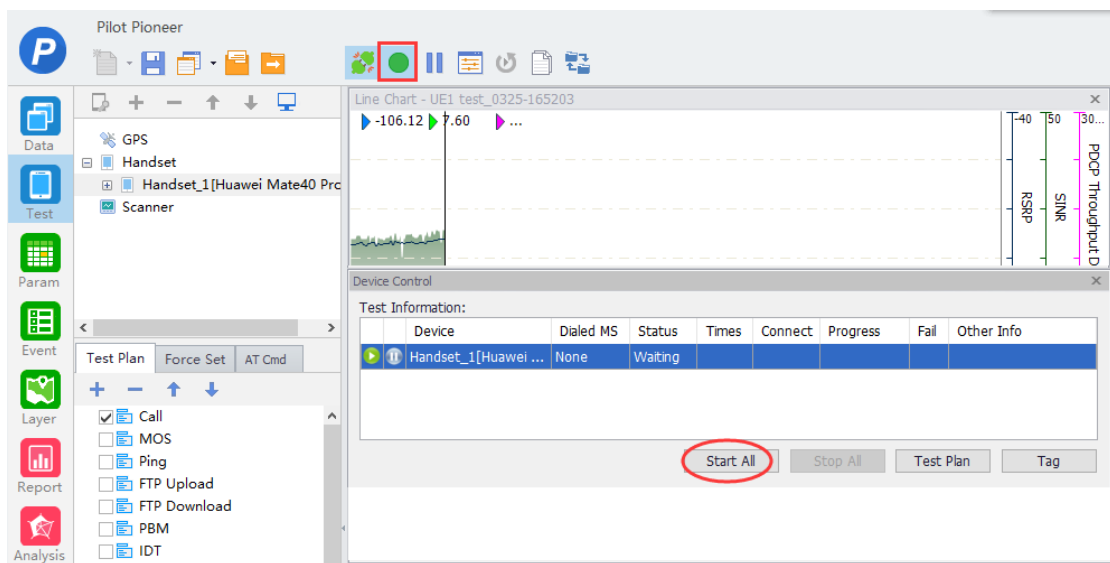
4.4.2 Recording Mode

In the recording mode, Pilot Pioneer is able to save log files in a specified directory after decoding.

To enter the recording mode, click the **Start Recording** icon () on the toolbar, or press the shortcut key **F7**.

Users may click the **Start** icon () or **Start All** button to start test services on the **Device Control** window.

Figure 4-7 Record mode



5 Technical Support and Contact Information

5.1 Technical Support

For any product usability issues encountered during operation, please refer to the user manual. If the issue cannot be solved or information is not available, please contact us via the following contact information:

| Area | E-mail |
|--------|--------------------|
| Global | support@dingli.com |

5.2 Link to DingLi

For more product information or service and technical support, please visit us at www.dingli.com.



DINGLI CORP., LTD

Address: No.8, 5th Technology Road, Gangwan Avenue, Zhuhai, 519085, P.R. China

Tel: +86-0756-3626100

Fax: +86-0756-3391900

Email: support@dingli.com

sales@dingli.com